

20-20 DESIGN + CATALOGS

*Supercharge your 20-20
Design Software to power
your design capabilities*

- Design with more configurable catalog shapes
- Choose from numerous configuration and modification options
- Create your own personal user catalog of your favorite shapes

20-20 Content

A powerful, affordable add-on library for the kitchen and bath industry's leading software, 20-20 Design. Take advantage of the impressive visualization and familiarity of 20-20 Design. Plus, acquire the flexibility to create custom cabinet work to sell your customers.



20-20 DESIGN+ CATALOGS

Bringing more value to your business.

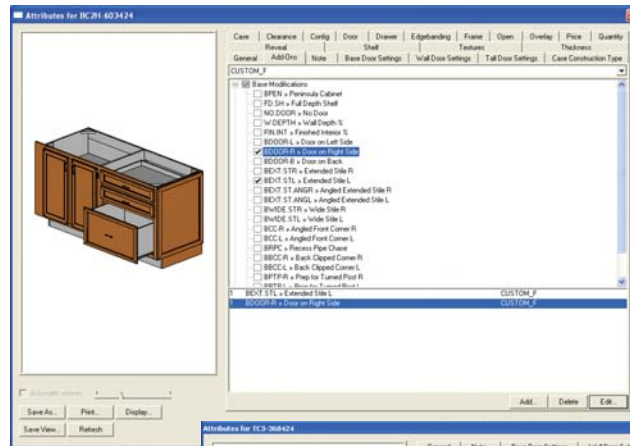
20-20 Design+ Catalogs allow dealers and manufacturers to design and sell with both stock and custom cabinets. Increase sales for custom and non-standard products.

These customizable catalogs improve communication between dealers and manufacturers, which makes ordering specials simpler, better and faster.

Boost your existing 20-20 Design Software by doubling your design options. Catalogs containing adaptable shapes give you the flexibility to efficiently design custom work. Add drawer glides, pipe chases, cut corners and much more to create specials.

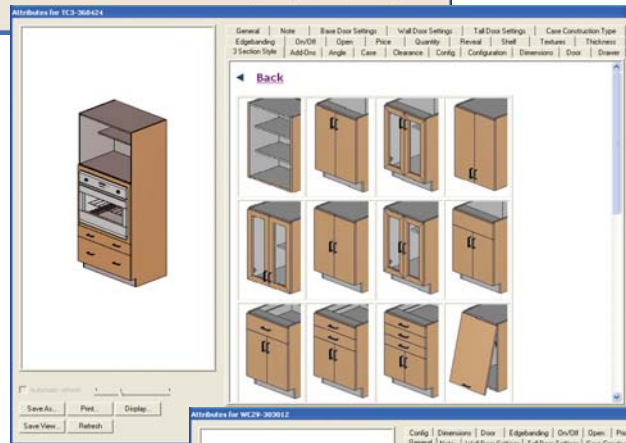
Benefit from the same high-quality graphics as with your existing catalogs, plus the ability to design products on the fly. Store specially created items in a personal user catalog for future 20-20 Design projects. Keep all your favorites handy.

Sell customers with stunning, accurate visuals. 20-20 Design+ Catalogs produce precise, detailed 3D images of every cabinet you generate. So, customers are never left wondering how their custom pieces will look when built and installed.

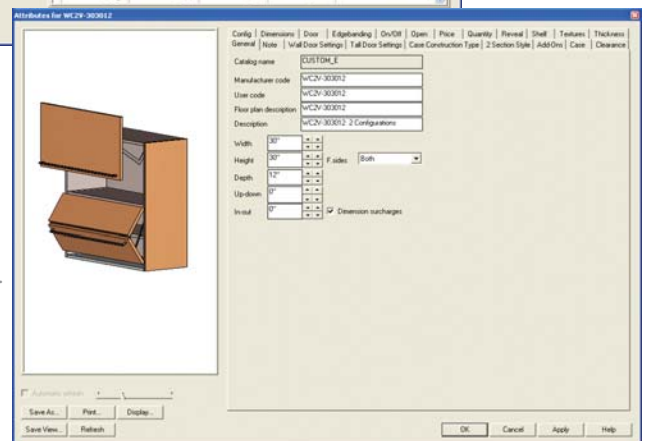


- Choose from a variety of configuration and modification options, including:
- Adding/eliminating cabinet components
 - Preparation for turn posts
 - Cut corners
 - Custom vertical and horizontal configurations

Design custom cabinets with 20-20's Design+ Catalogs using 20-20 Design's familiar attributes screen. Easy to learn and use.



Easily modify cabinets to fit your design needs. Specify dimensions, hardware and more. View changes directly on screen.



Enhance your 20-20 Design V6.4 (or higher) with Design+ Catalogs

BENEFITS

- Design and sell custom cabinets to meet your job specifications
- Easily and efficiently create custom cabinets in the 20-20 Design attributes screen
- Help customers visualize their room design with stunning, accurate graphics and renderings

Don't limit yourself to shapes in your existing catalogs- design the exact cabinet you want and when you need it.

FEATURES

■ Work with any of the following 20-20 Design+ Catalogs

- Design+ F: Frame cabinets, imperial
- Design+ E: Frameless cabinets, imperial
- Design+ M: Frameless cabinets, metric
- Design+ C: Closet, imperial

■ User Catalog

Create and save specials or custom cabinets in a personal user catalog for future 20-20 Design projects.

■ Detailed 3D Images

Create 3D images of cabinets with highly accurate details. Watch the product instantly evolve on screen as you modify the cabinet.

■ Cabinet Configurations

Every cabinet is built from a number of sections or configurations. Each section can be filled with a particular component to complete a cabinet. Different cabinets exist for horizontal and vertical arrangements of sections.

■ Defaults & Exceptions

Default settings for various cabinet options and parts are available. As with 20-20 Design Software and sample catalogs, exceptions can be specified for one or more cabinets.

■ Output

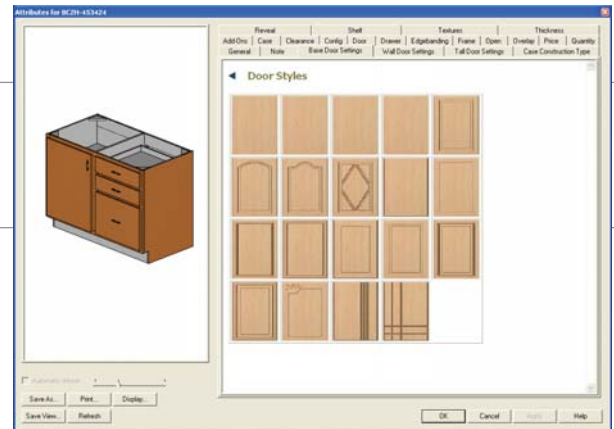
Produce bill of materials, door lists and cut lists for enhanced control over cabinet construction. To produce accurate cut lists, manufacturers can customize their catalogs to reflect their construction methodology.

■ Cabinet Selection & Modification Options

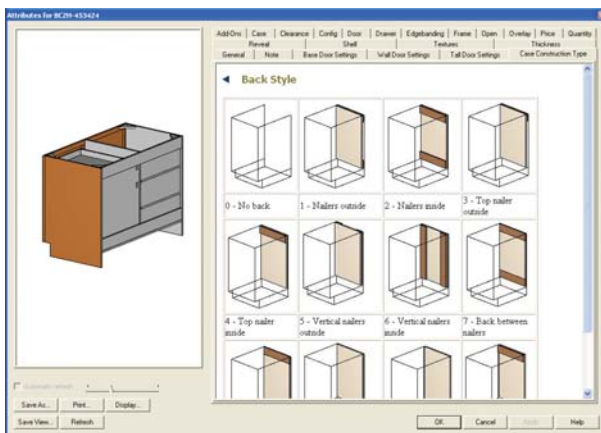
Every cabinet in the library is fully customizable. Use a wide assortment of parameters to modify product appearance and manufacturing techniques.

- This includes:
- Cabinet Types: multi-section cabinets: base, tall, wall
 - Configuration Elements: for use with any cabinet
 - Cabinet Modifications: peninsula cabinets, door sides, angle corners, clipped corners, leg placement and more
 - Door Style: an innumerable list of designs
 - Construction Parameters: back case style, top case style, shelves & dividers, top construction, floor construction, top & bottom depth, side depth, drawer style
 - Hardware: pull style, hinge style, drawer slide style

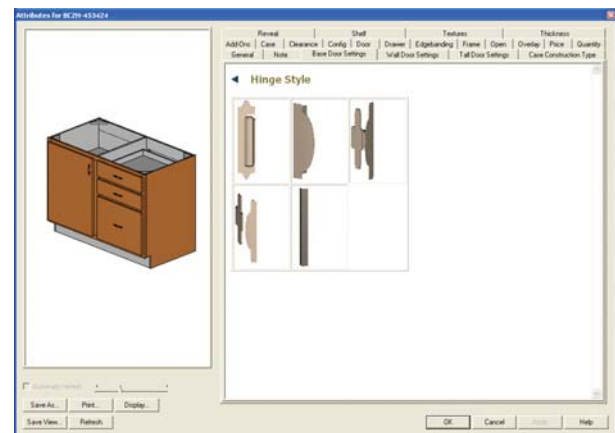
Impress customers with photo-realistic design images containing both stock and special items.



Door Style



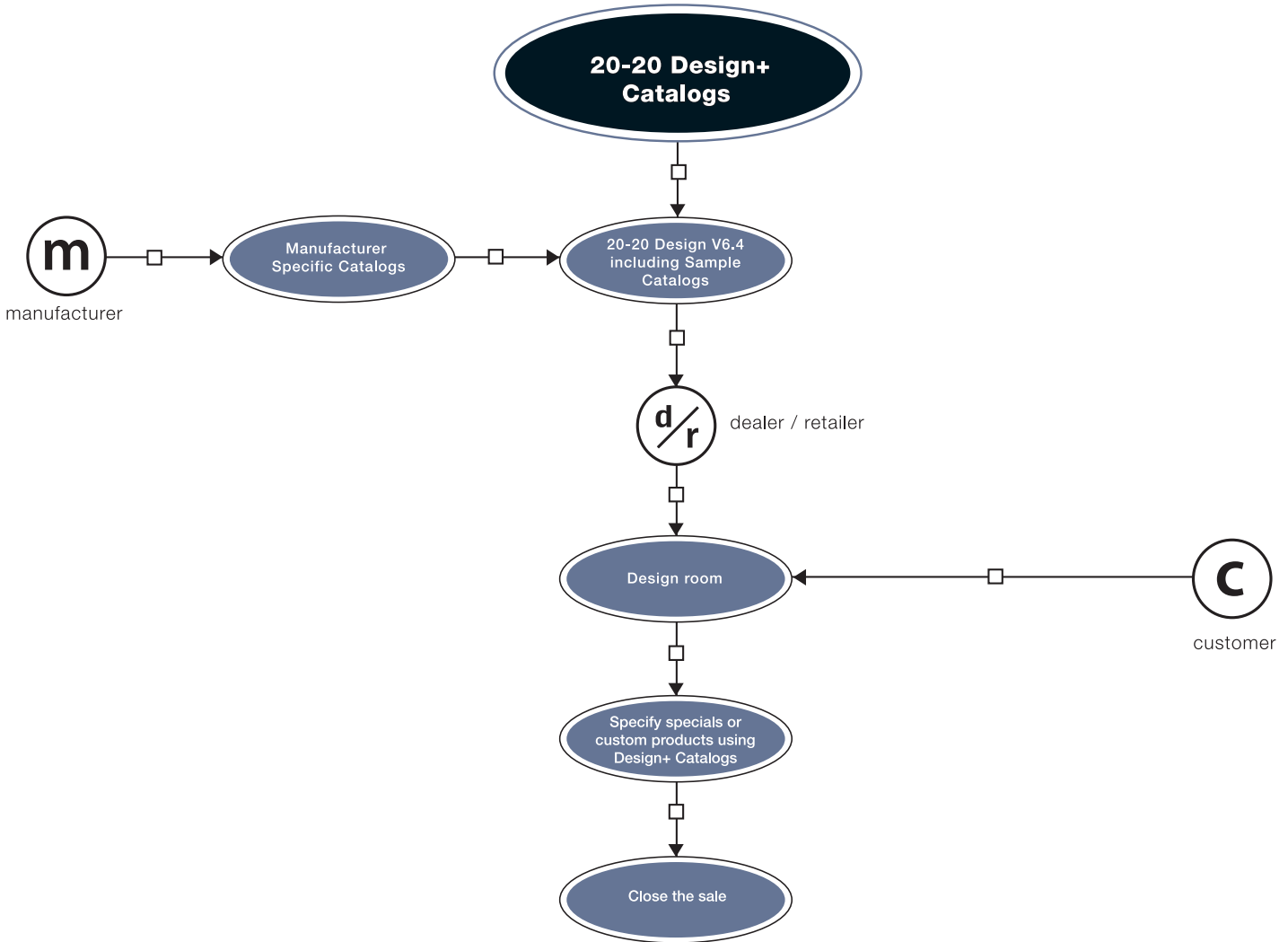
Construction Parameters



Hardware

PRODUCT DIAGRAM

- 20-20 Design+ Catalogs give you more catalog options and the ability to modify shapes on the fly. Then close sales with stunning 20-20 Design visuals.



SYSTEM REQUIREMENTS

- 20-20 Design V.6.4 or higher

Need more information? Contact us at: www.2020.net

World Headquarters & Residential - Sales & Service:

20-20 Technologies Inc.
 400 Armand-Frappier Blvd.
 Suite 2020
 Laval, Quebec
 Canada H7V 4B4

Phone: (514) 332-4110
 FAX: (514) 334-6043
 Sales Toll Free: (866) 698-2020
 Quebec Toll Free: (888) 504-2020
 E-mail: sales@2020.net

Commercial - Sales & Service:

20-20 Technologies Inc.
 99 Monroe Avenue, NW
 Suite 400
 Grand Rapids, MI
 USA 49503-2651

Phone: (616) 454-0000
 FAX: (616) 454-4140
 Sales Toll Free: (800) 227-0038
 E-mail: commercial.sales@2020.net



062004

© 1998-2004 - 20-20 Technologies Inc. All rights reserved. The names 20-20 Technologies, 20-20, 20-20 Design, 2020.net, CAP Studio and Giza, are registered, pending or common law trademarks of 20-20 Technologies Inc. and/or any of its subsidiaries. All reference to other brands and products appearing herein are trademarks of their respective holder(s). 20-20 Technologies Inc. reserves the right to alter specifications and other product information without prior notice. The software and information contained herein are subject to the terms and conditions of the License Agreement included with the media.